

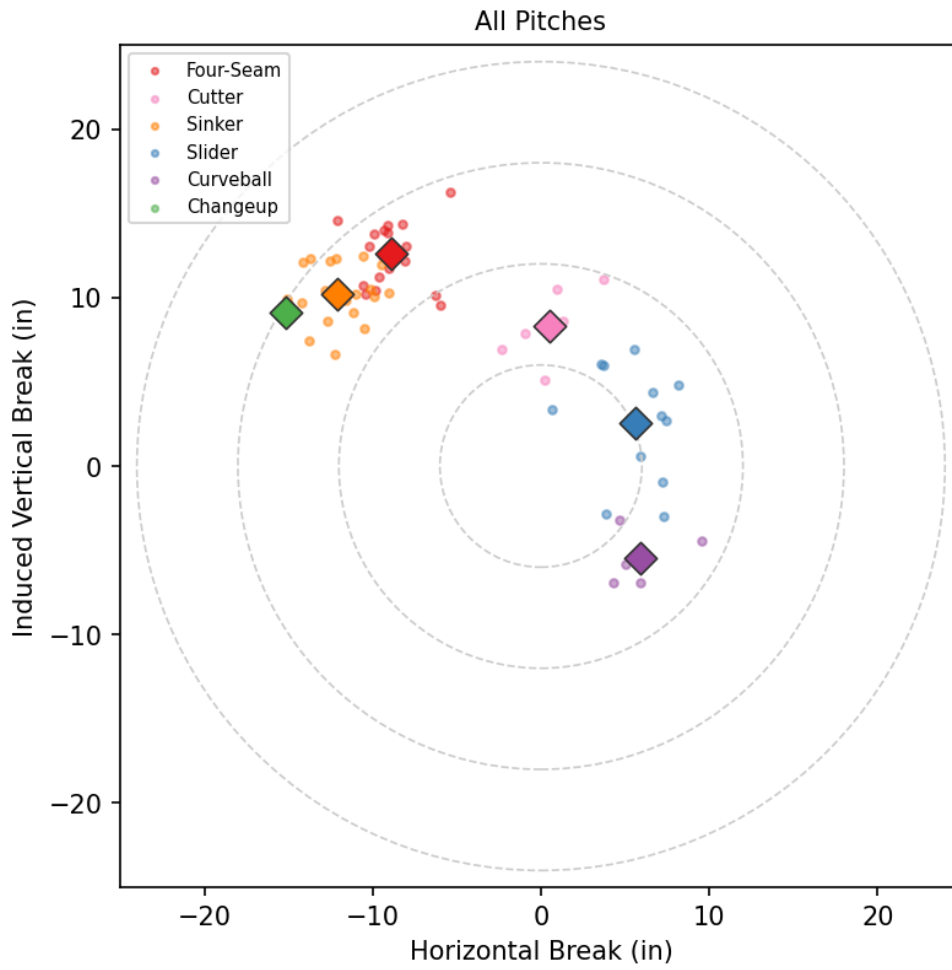
Ricardo Sánchez

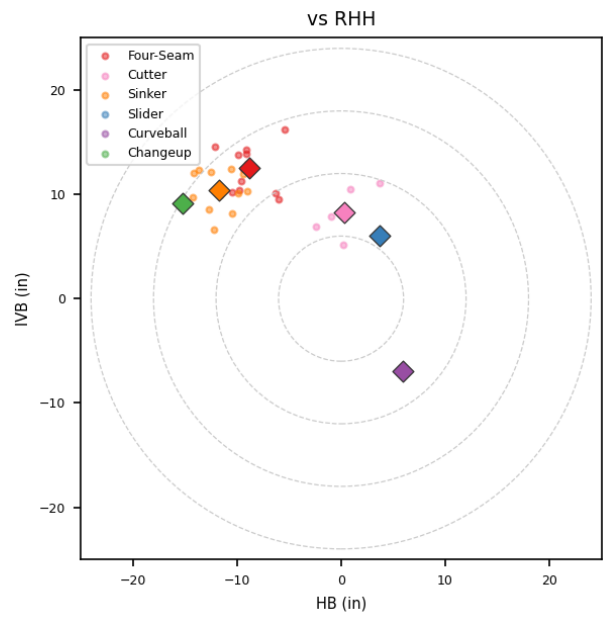
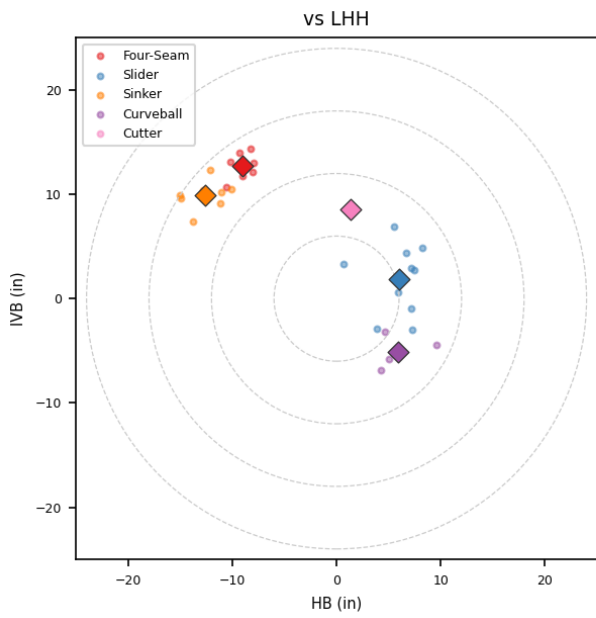
VAQ_LAG | Left | 2026-04-16 to 2026-04-22

Pitching Profile

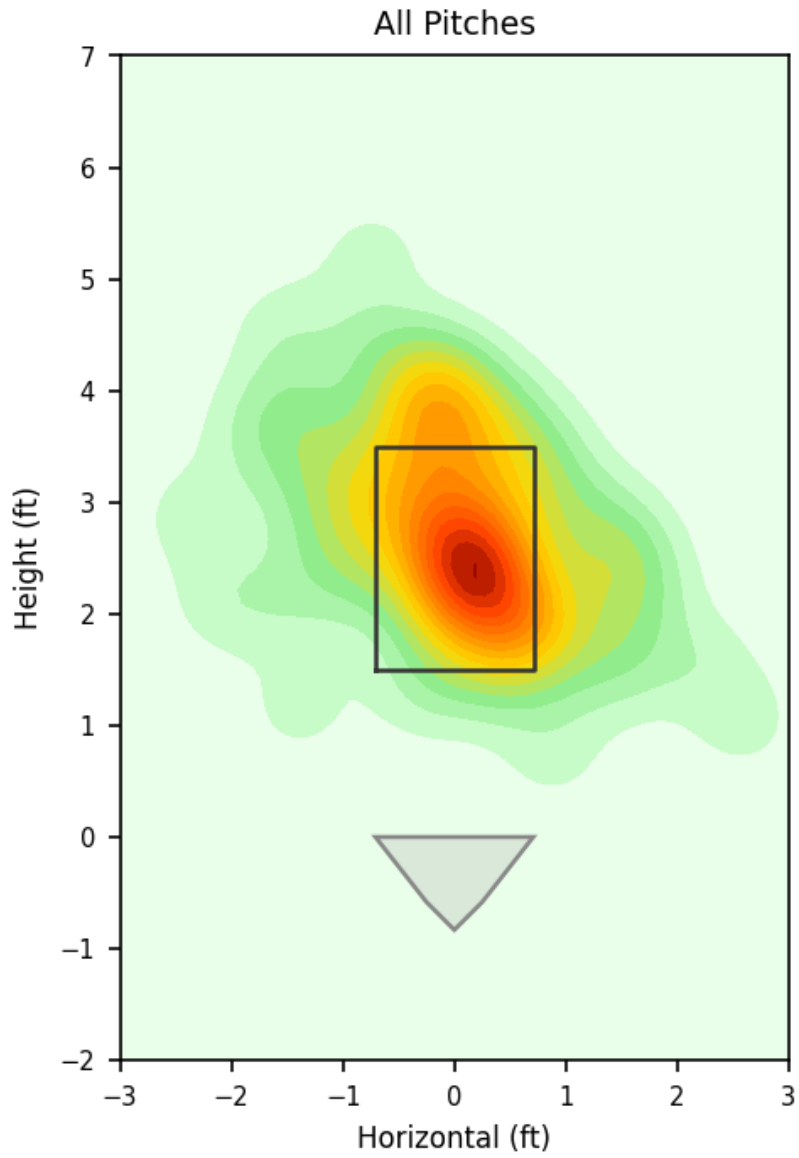
Pitch Type	Count	%	Avg Velo	Max Velo	Avg Spin	IVB	HB	Ext	Whiff%
Four-Seam	20	31.2%	92.0	93.6	2279.0	12.6	-8.9	6.0	50.0%
Sinker	20	31.2%	91.0	93.4	2216.0	10.2	-12.1	6.1	-
Slider	12	18.8%	85.4	88.5	2498.0	2.6	5.6	5.7	40.0%
Cutter	6	9.4%	87.4	88.7	2456.0	8.3	0.5	5.7	-
Curveball	5	7.8%	78.6	79.8	2627.0	-5.5	5.9	5.7	-
Changeup	1	1.6%	87.2	87.2	1904.0	9.1	-15.2	6.4	100.0%

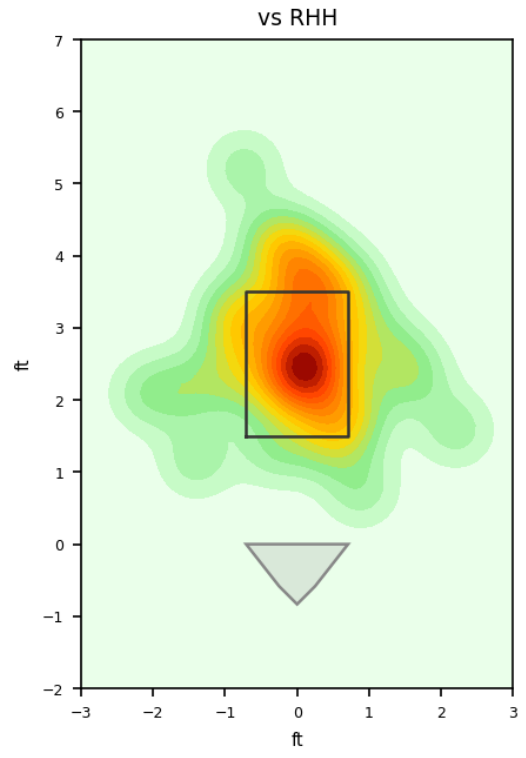
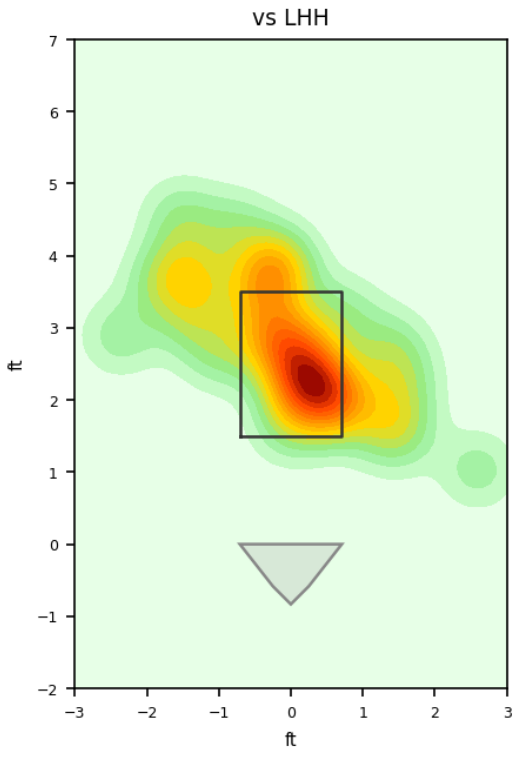
Movement Profile



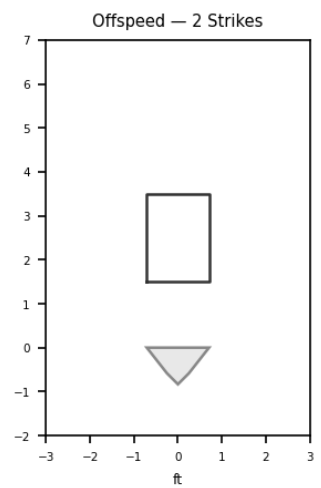
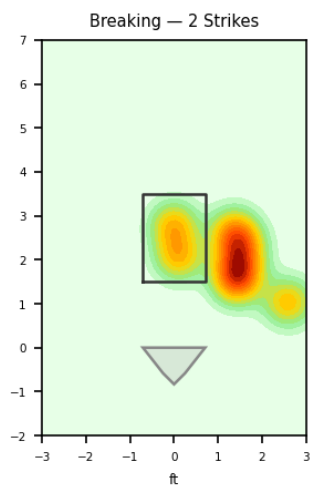
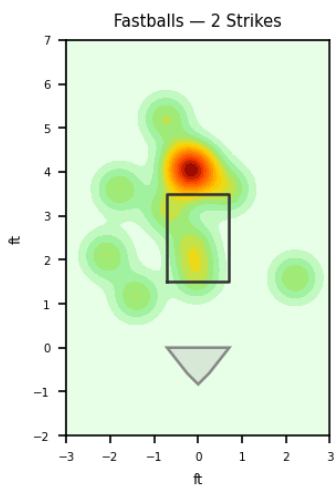
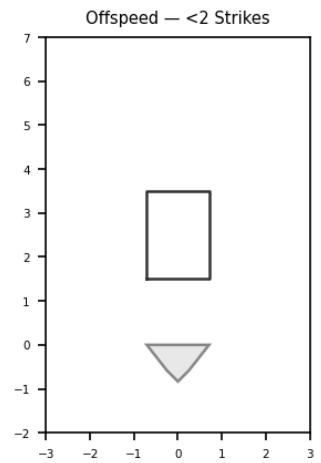
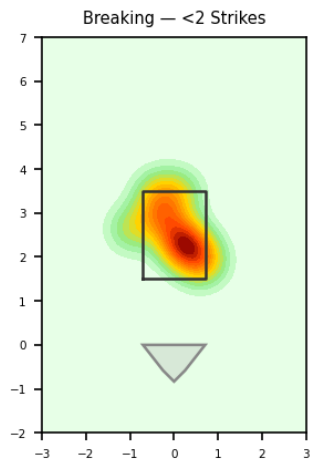
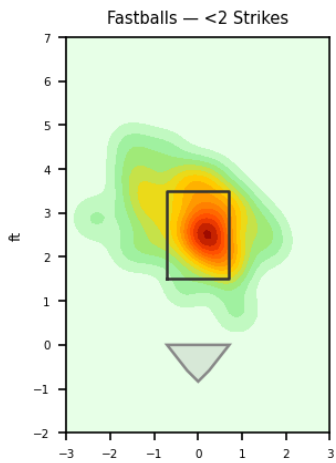


Location Density

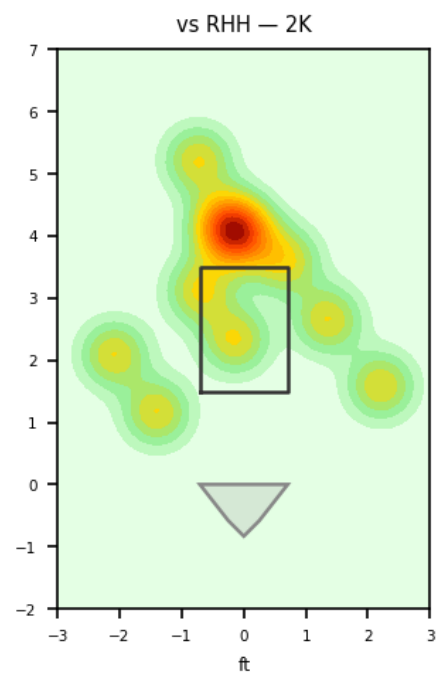
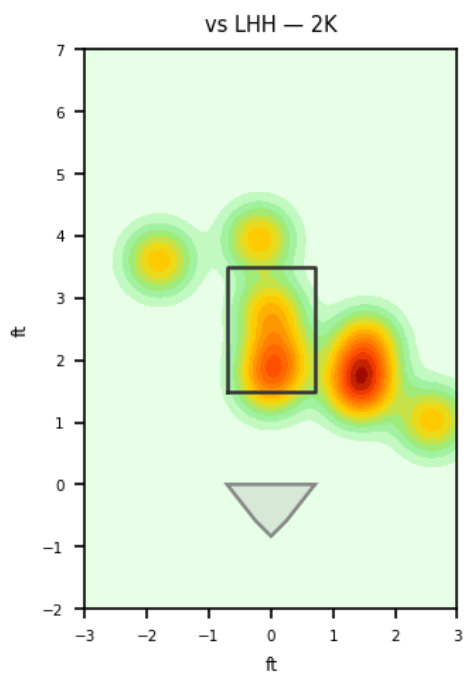
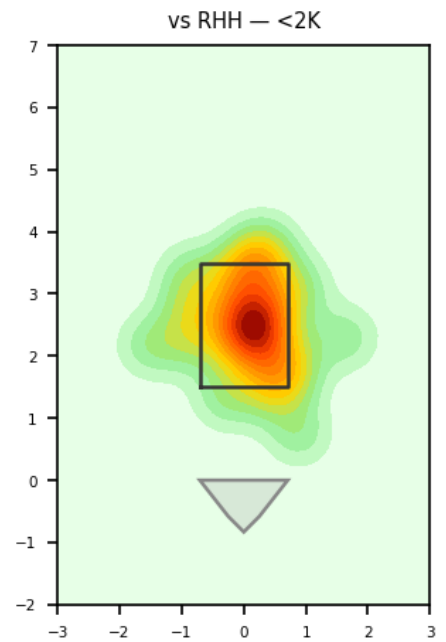
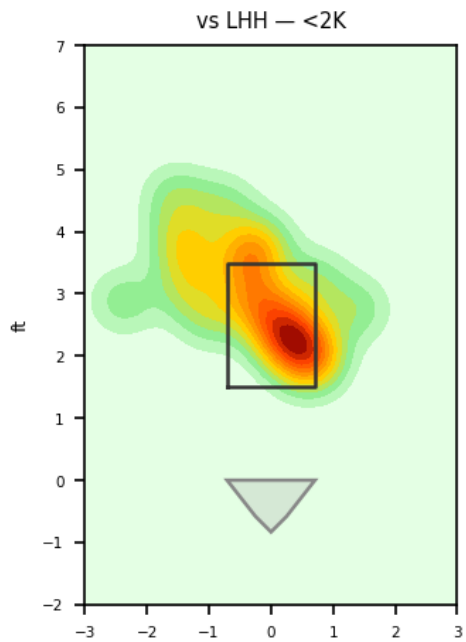




Location by Pitch Type & Count



Location by Handedness & Count



Splits vs LHH

Pitch	Count	%	Velo	Spin	IVB	HB	Whiff%
Slider	10	33.3%	85.2	2515.0	1.9	6.0	33.3%
Sinker	8	26.7%	92.1	2301.0	9.9	-12.6	-
Four-Seam	7	23.3%	92.6	2298.0	12.7	-9.1	-
Curveball	4	13.3%	78.9	2633.0	-5.1	5.9	-
Cutter	1	3.3%	86.9	2531.0	8.6	1.3	-

Splits vs RHH

Pitch	Count	%	Velo	Spin	IVB	HB	Whiff%
Four-Seam	13	38.2%	91.8	2268.0	12.5	-8.8	66.7%
Sinker	12	35.3%	90.2	2160.0	10.4	-11.7	-
Cutter	5	14.7%	87.5	2441.0	8.3	0.3	-
Slider	2	5.9%	86.6	2414.0	6.0	3.7	50.0%
Changeup	1	2.9%	87.2	1904.0	9.1	-15.2	100.0%
Curveball	1	2.9%	77.4	2602.0	-6.9	5.9	-

Advanced Pitching (TrackMan)

Stat	Value	Stat	Value
Pitches	64	Games	1
Avg Velo	88.9 mph	Max Velo	93.6 mph
Avg Spin	2338.0 rpm	Extension	5.9 ft
IVB	8.1 in	HB	-5.2 in
Whiffs	5	BIP	21
Avg Exit Velo	81.7 mph	Dates	2026-04-18 to 2026-04-18

Pitch Mix

Pitch Type	Count	Avg Velo	Max Velo	Avg Spin	IVB	HB	Whiffs	BIP
Four-Seam	20	92.0	93.6	2279.0	12.6	-8.9	2	6
Sinker	20	91.0	93.4	2216.0	10.2	-12.1	0	5
Slider	12	85.4	88.5	2498.0	2.6	5.6	2	4
Cutter	6	87.4	88.7	2456.0	8.3	0.5	0	4
Curveball	5	78.6	79.8	2627.0	-5.5	5.9	0	2
Changeup	1	87.2	87.2	1904.0	9.1	-15.2	1	0

Traditional Pitching (API)

Stat	Value	Stat	Value
W-L	0-1	ERA	9.0
G/GS	1/1	SV/HD	0/0
IP	4.0	H/ER/HR	5/4/0
K/BB	2/1	K/BB Ratio	2.0
WHIP	1.5	K/9	4.5
BB/9	2.3	BF	18